

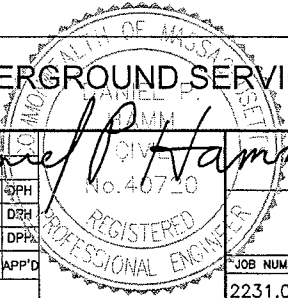



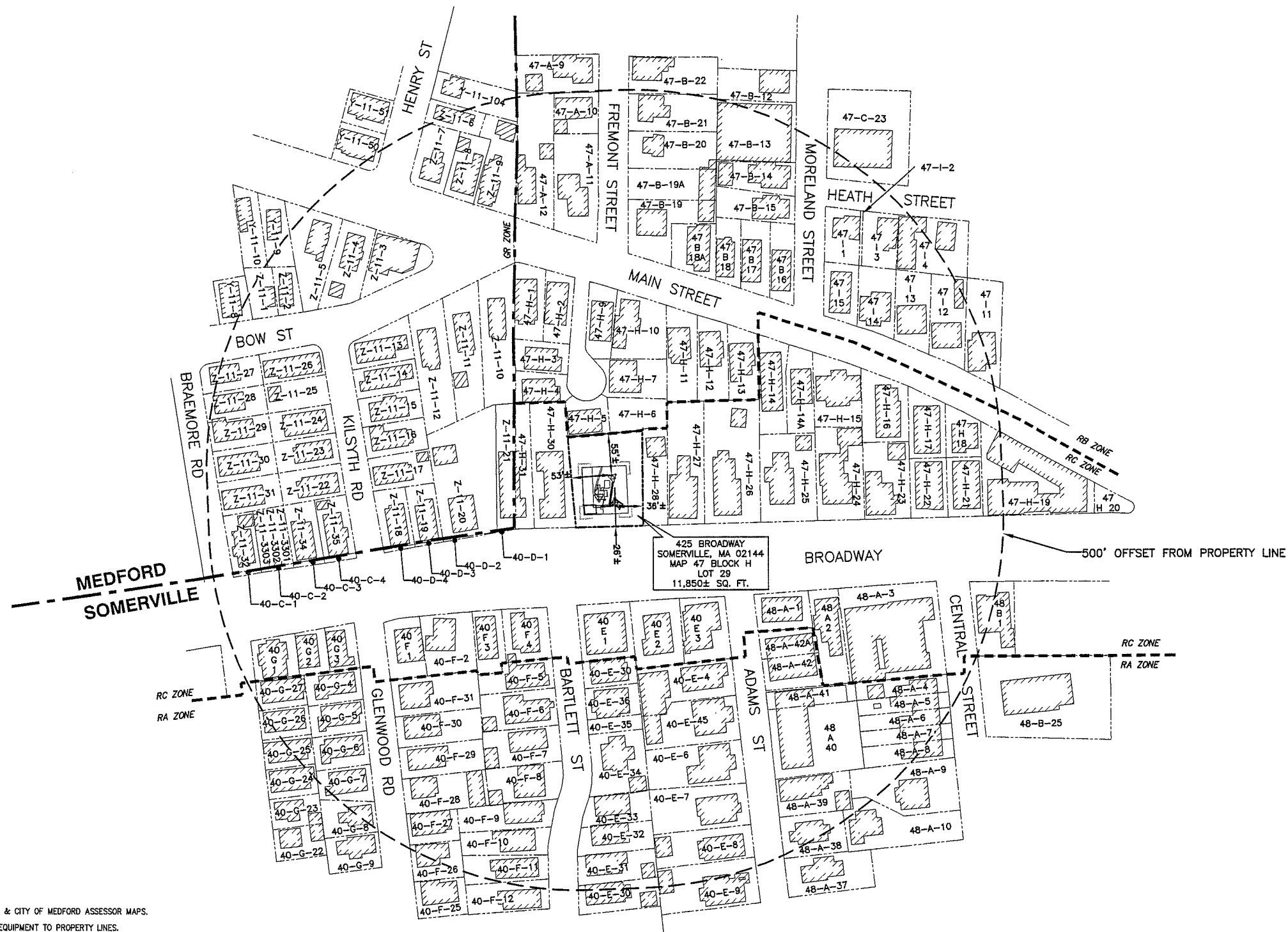
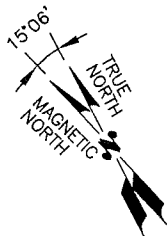


PROJECT INFORMATION		<div></div> <div>SITE NUMBER: MA2231 SITE NAME: SOMERVILLE 425 BROADWAY (MA0022)</div>																																
<div>SCOPE OF WORK: UNMANNED TELECOMMUNICATIONS FACILITY MODIFICATIONS</div> <div>SITE ADDRESS: 425 BROADWAY SOMERVILLE, MA 02145</div> <div>LATITUDE: N 42.3961' 42° 23' 45.96" N</div> <div>LONGITUDE: W -71.0997° -71° 05' 58.92" W</div> <div>JURISDICTION: NATIONAL, STATE & LOCAL CODES OR ORDINANCES</div> <div>CURRENT USE: TELECOMMUNICATIONS FACILITY</div> <div>PROPOSED USE: TELECOMMUNICATIONS FACILITY</div> <div>NOC#: 800-638-2822</div>																																		
DRAWING INDEX		REV	VICINITY MAP	GENERAL NOTES																														
T-1 TITLE SHEET		2	<div>DIRECTIONS TO SITE: FROM FRAMINGHAM, MA. START OUT GOING SOUTHWEST ON COCHITUATE RD / MA-30 W TOWARD WHITTIER ST. 0.2 MI, MAKE A U-TURN AT WHITTIER ST ONTO COCHITUATE RD(RT-30 E) - 0.3 MI, TAKE RAMP ONTO I-90 E TOWARD BOSTON/MASS PIKE ENTRANCE/JCT I-95 (TOLL APPLIES) - 18.2 MI, TAKE LEFT EXIT #24 A-B-C/QUINCY/S. STATION/CONCORD NH ONTO I-93 N TOWARD #24C-B/#24B/24C-B/CONCORD NH (TOLL APPLIES) - 4.0 MI, TAKE EXIT #29/SOMERVILLE (RT-28)/EVERETT (RT-38) ONTO MYSTIC AVE(RT-38 N) TOWARD MC GRATH HWY (RT-28)/SOMERVILLE - 0.3 MI, MAKE A SHARP LEFT TURN ON MYSTIC AVE(RT-38 S), TURN RIGHT ON FELLSWAY W - 0.3 MI, TURN RIGHT ON BROADWAY - 0.5 MI, BEAR RIGHT ON BROADWAY - 0.1 MI, ARRIVE AT 425 BROADWAY, SOMERVILLE, ON THE RIGHT.</div> <div></div>	<div>1. THIS DOCUMENT IS THE CREATION, DESIGN, PROPERTY AND COPYRIGHTED WORK OF AT&T. ANY DUPLICATION OR USE WITHOUT EXPRESS WRITTEN CONSENT IS STRICTLY PROHIBITED. DUPLICATION AND USE BY GOVERNMENT AGENCIES FOR THE PURPOSES OF CONDUCTING THEIR LAWFULLY AUTHORIZED REGULATORY AND ADMINISTRATIVE FUNCTIONS IS SPECIFICALLY ALLOWED.</div> <div>2. THE FACILITY IS AN UNMANNED PRIVATE AND SECURED EQUIPMENT INSTALLATION. IT IS ONLY ACCESSED BY TRAINED TECHNICIANS FOR PERIODIC ROUTINE MAINTENANCE AND THEREFORE DOES NOT REQUIRE ANY WATER OR SANITARY SEWER SERVICE. THE FACILITY IS NOT GOVERNED BY REGULATIONS REQUIRING PUBLIC ACCESS PER ADA REQUIREMENTS.</div> <div>3. CONTRACTOR SHALL VERIFY ALL PLANS AND EXISTING DIMENSIONS AND CONDITIONS ON THE JOB SITE AND SHALL IMMEDIATELY NOTIFY THE AT&T REPRESENTATIVE IN WRITING OF DISCREPANCIES BEFORE PROCEEDING WITH THE WORK OR BE RESPONSIBLE FOR SAME.</div>																														
GN-1 GENERAL NOTES		2																																
C-1 PLOT PLAN		2																																
A-1 ROOF & EQUIPMENT PLAN		2																																
A-2 ELEVATIONS		2																																
A-3 ELEVATIONS		2																																
A-4 DETAILS		2																																
G-1 PLUMBING DIAGRAM & DETAILS		2																																
				<div>72 HOURS BEFORE YOU DIG</div> <div>CALL TOLL FREE 888-DIG-SAFE</div>																														
				<div>UNDERGROUND SERVICE ALERT</div> <div></div> <div>AT&T</div> <div>TITLE SHEET</div> <table><tr><td>JOB NUMBER</td><td>DRAWING NUMBER</td><td>REV</td></tr><tr><td>2231.01</td><td>T-1</td><td>2</td></tr></table>	JOB NUMBER	DRAWING NUMBER	REV	2231.01	T-1	2																								
JOB NUMBER	DRAWING NUMBER	REV																																
2231.01	T-1	2																																
<div><div>1600 OSGOOD STREET BUILDING 20 NORTH, SUITE 2-101 N. ANDOVER, MA 01845</div><div>TEL: (978) 557-5553 FAX: (978) 336-5586</div></div>	<div><div>22 KEEWAYDIN DRIVE SALEM, NH 03079</div></div>	<div>SITE NUMBER: MA2231 SITE NAME: SOMERVILLE 425 BROADWAY (MA0022) 425 BROADWAY SOMERVILLE, MA 02145 MIDDLESEX COUNTY</div>	<div><div>550 COCHITUATE ROAD FRAMINGHAM, MA 01701</div></div>	<table><tr><td>2</td><td>12/15/10</td><td>ISSUED FOR ZONING</td><td>SB</td><td>AT</td><td>DPH</td></tr><tr><td>1</td><td>10/04/10</td><td>ISSUED FOR ZONING</td><td>SB</td><td>AT</td><td>DPH</td></tr><tr><td>A</td><td>10/01/10</td><td>ISSUED FOR REVIEW</td><td>SB</td><td>AT</td><td>DPH</td></tr><tr><td>NO.</td><td>DATE</td><td>REVISIONS</td><td>BY</td><td>CHK</td><td>APP'D</td></tr><tr><td colspan="2">SCALE: AS SHOWN</td><td>DESIGNED BY: AT</td><td colspan="3">DRAWN BY: SB</td></tr></table>	2	12/15/10	ISSUED FOR ZONING	SB	AT	DPH	1	10/04/10	ISSUED FOR ZONING	SB	AT	DPH	A	10/01/10	ISSUED FOR REVIEW	SB	AT	DPH	NO.	DATE	REVISIONS	BY	CHK	APP'D	SCALE: AS SHOWN		DESIGNED BY: AT	DRAWN BY: SB		
2	12/15/10	ISSUED FOR ZONING	SB	AT	DPH																													
1	10/04/10	ISSUED FOR ZONING	SB	AT	DPH																													
A	10/01/10	ISSUED FOR REVIEW	SB	AT	DPH																													
NO.	DATE	REVISIONS	BY	CHK	APP'D																													
SCALE: AS SHOWN		DESIGNED BY: AT	DRAWN BY: SB																															



- NOTES:
1. PLOT PLAN BASED ON PLANS BY CITY OF SOMERVILLE & CITY OF MEDFORD ASSESSOR MAPS.
 2. SETBACKS ARE TAKEN FROM THE CLOSEST POINT OF EQUIPMENT TO PROPERTY LINES.
 3. SITE SURVEY NOT PERFORMED BY HUDSON DESIGN GROUP LLC.

PLOT PLAN

SCALE: 1"=80'

0 40' 80' 160' 240'

ZONING SUMMARY TABLE

ZONING DISTRICT:	RESIDENTIAL C (RC)	
ASSESSORS MAP:	MAP 47 BLOCK H LOT 29	
PROPOSED USE:	WIRELESS COMMUNICATION FACILITY	
DIMENSION:	REQUIRED	PROVIDED
LOT AREA	7,500 SF	N/A
LOT FRONTAGE	50 FT	N/A
FRONT YARD SETBACK*	15 FT	26 FT
SIDE YARD SETBACK*	22.67 FT	36 FT
REAR YARD SETBACK*	20 FT	55 FT
* DIMENSIONS MEASURED FROM THE CLOSEST POINT OF EQUIPMENT TO NEAREST LOT LINE.		



1600 OSGOOD STREET
BUILDING 20 NORTH, SUITE 2-101
N. ANDOVER, MA 01845
TEL: (978) 557-5553
FAX: (978) 336-5586



22 KEEWAYDIN DRIVE
SALEM, NH 03079

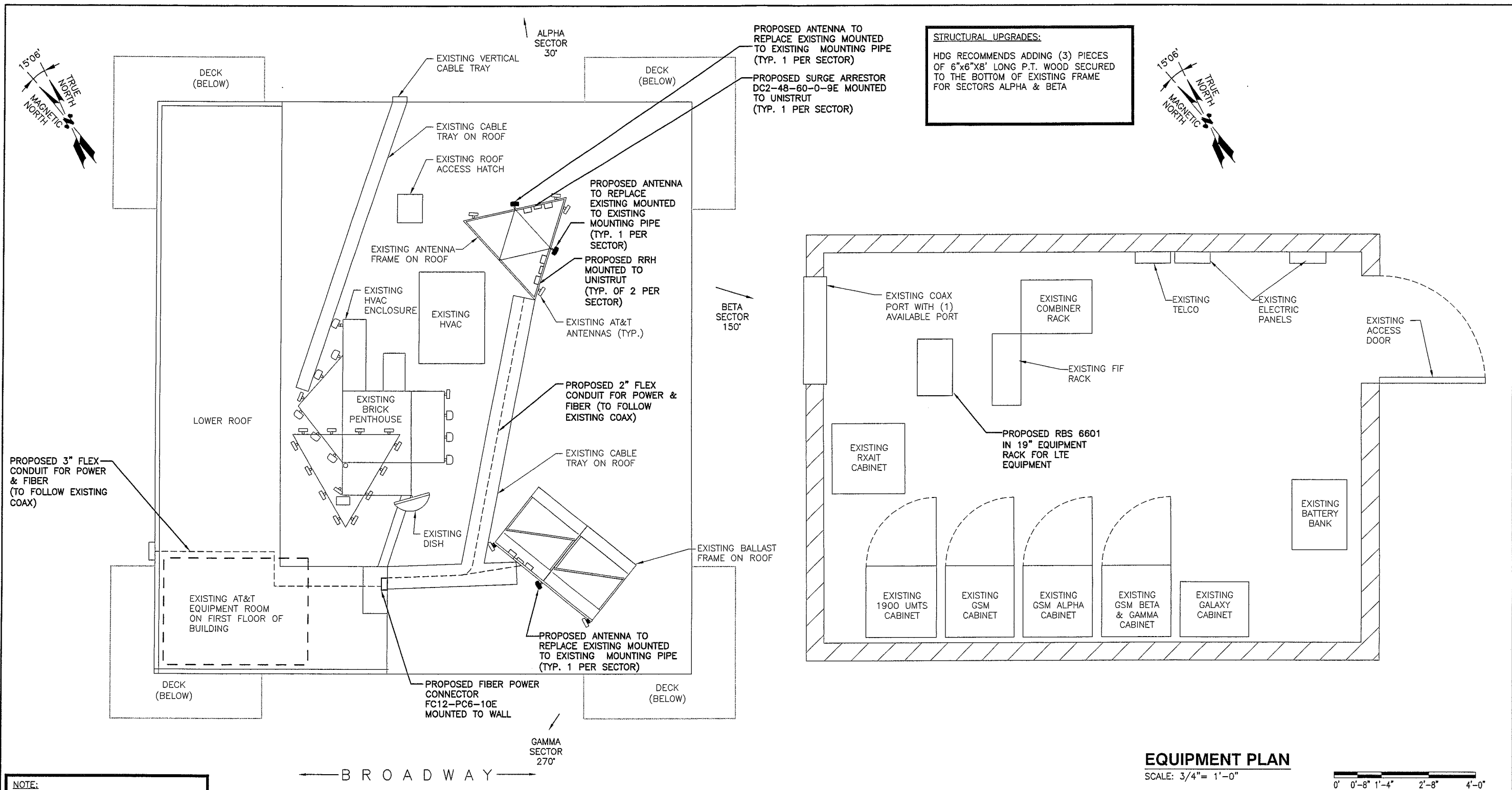
SITE NUMBER: MA2231
SITE NAME: SOMERVILLE 425
BROADWAY (MA0022)

425 BROADWAY
SOMERVILLE, MA 02145
MIDDLESEX COUNTY



550 COCHITUATE ROAD
FRAMINGHAM, MA 01701

				AT&T	
				PLOT PLAN	
NO.	DATE	REVISIONS	BY	CHK	APP'D
2	12/15/10	ISSUED FOR ZONING	SB	AT	DPH
1	10/04/10	ISSUED FOR ZONING	SB	AT	DRH
A	10/01/10	ISSUED FOR REVIEW	SB	AT	DPH
SCALE: AS SHOWN				DESIGNED BY: AT	DRAWN BY: SB
JOB NUMBER		DRAWING NUMBER		REV	
2231.01		C-1		2	



Hudson
Design Group, LLC

1600 OSGOOD STREET
BUILDING 20 NORTH, SUITE 2-101
N. ANDOVER, MA 01845

TEL: (978) 557-5553
FAX: (978) 336-5586



22 KEEWAYDIN DRIVE
SALEM, NH 03079

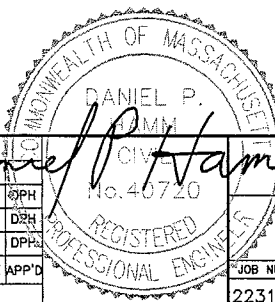
SITE NUMBER: MA2231
SITE NAME: SOMERVILLE 425 BROADWAY (MA0022)
425 BROADWAY
SOMERVILLE, MA 02145
MIDDLESEX COUNTY

at&t

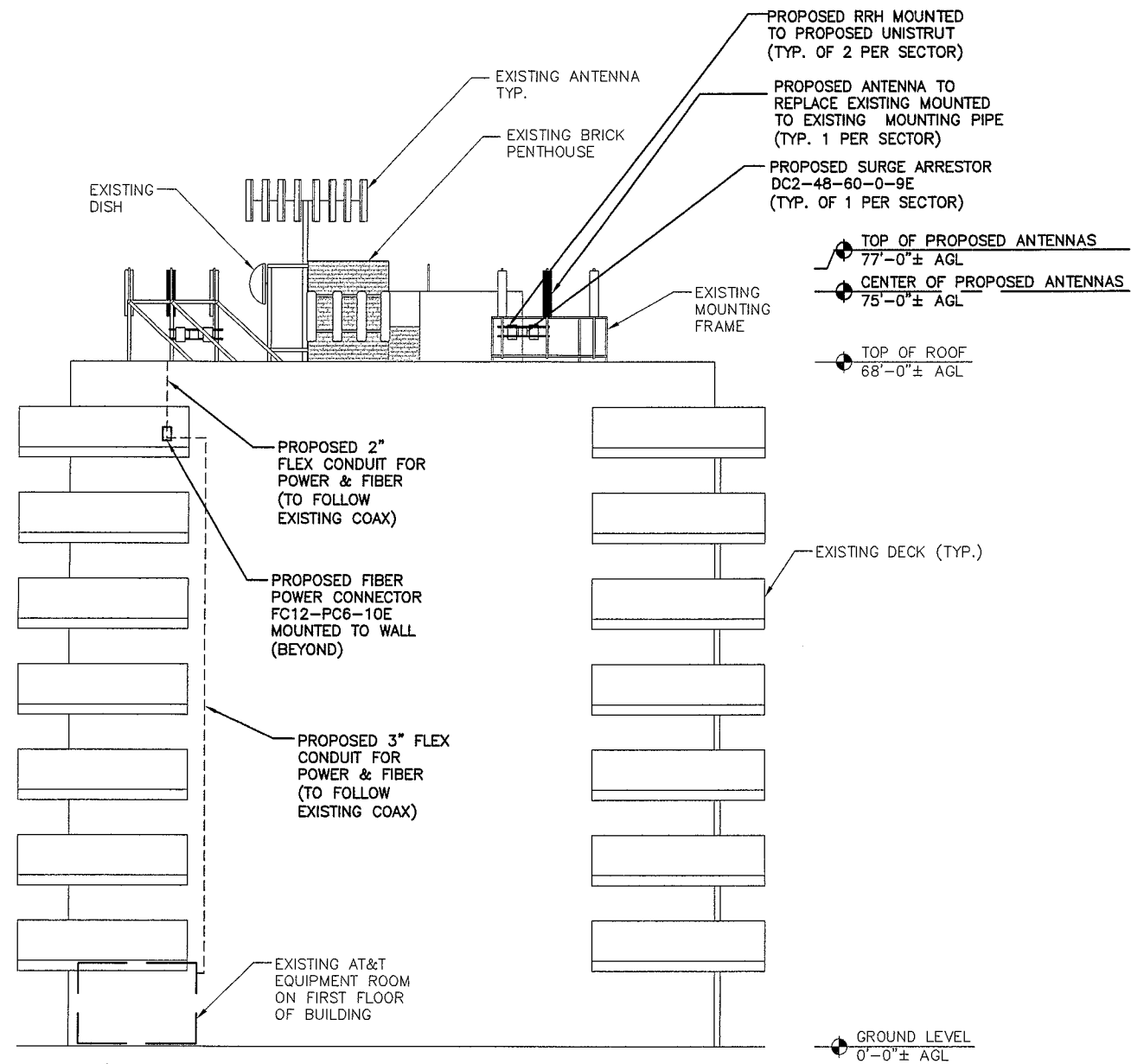
550 COCHITUATE ROAD
FRAMINGHAM, MA 01701

NO.	DATE	REVISIONS	BY	CHK	APP'D
2	12/15/10	ISSUED FOR ZONING	SB	AT	DPH
1	10/04/10	ISSUED FOR ZONING	SB	AT	DZH
A	10/01/10	ISSUED FOR REVIEW	SB	AT	DPH

SCALE: AS SHOWN DESIGNED BY: AT DRAWN BY: SB

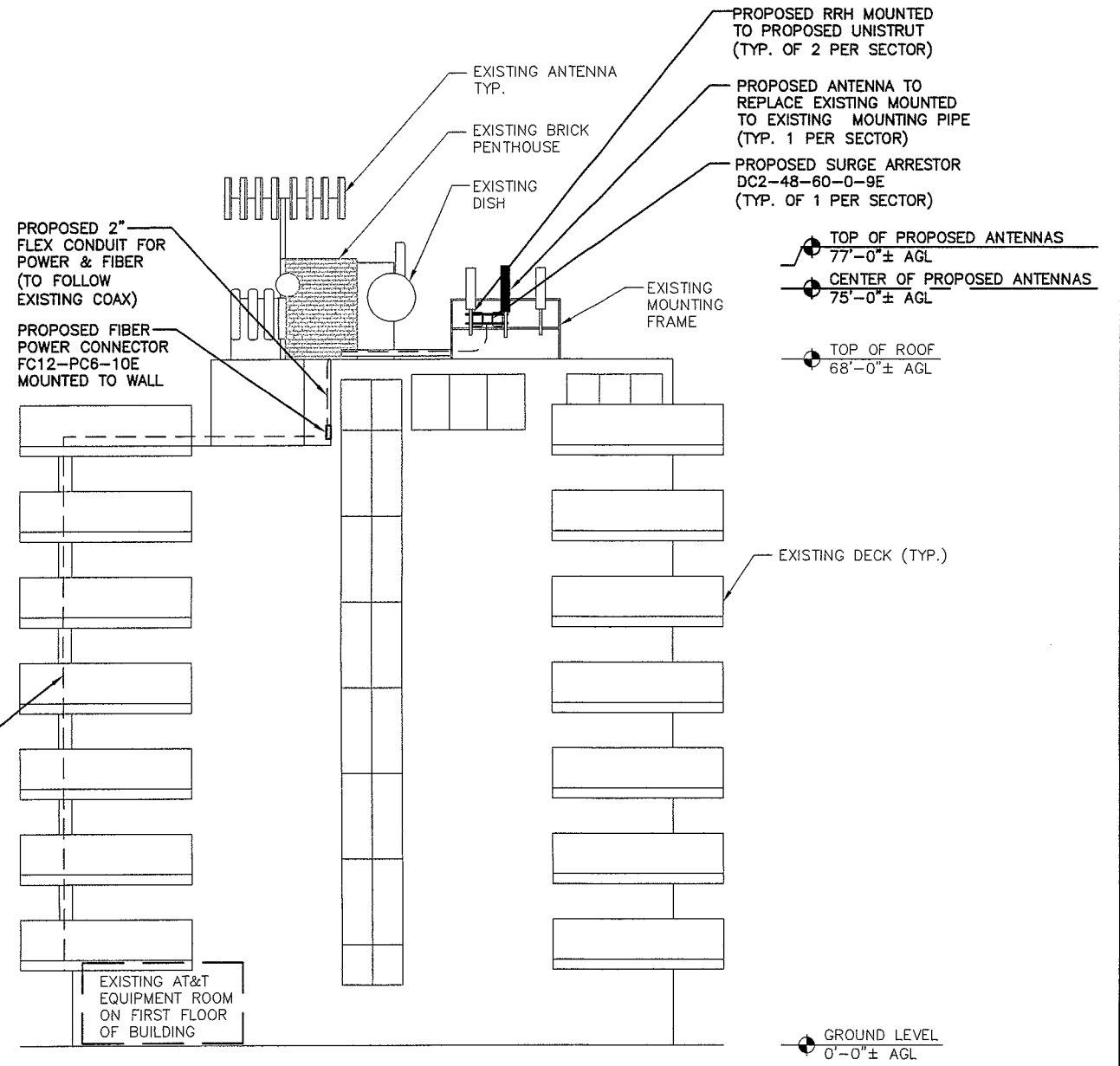
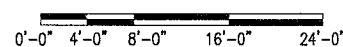


AT&T		REV
ROOF & EQUIPMENT PLAN		
JOB NUMBER	DRAWING NUMBER	
2231.01	A-1	2



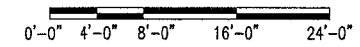
SOUTHEAST ELEVATION

SCALE: 1/8"=1'-0"



SOUTHWEST ELEVATION

SCALE: 1/8"=1'-0"



Hudson
Design Group, Inc.

1400 OSGOOD STREET
BUILDING 20 NORTH, SUITE 2-101
N. ANDOVER, MA 01845

TEL: (978) 557-5553
FAX: (978) 336-5586

SAT
communications

22 KEEWAYDIN DRIVE
SALEM, NH 03079

SITE NUMBER: MA2231
SITE NAME: SOMERVILLE 425 BROADWAY (MA0022)

425 BROADWAY
SOMERVILLE, MA 02145
MIDDLESEX COUNTY

at&t

550 COCHITUATE ROAD
FRAMINGHAM, MA 01701

<p>2 12/15/10 ISSUED FOR ZONING SB AT DPH</p>				<p>AT&T</p>	
<p>1 10/04/10 ISSUED FOR ZONING SB AT DPH</p>				<p>ELEVATIONS</p>	
<p>A 10/01/10 ISSUED FOR REVIEW SB AT DPH</p>				<p>2231.01 A-2 2</p>	
<p>NO. DATE</p>		<p>REVISIONS</p>		<p>BY CHK APP'D</p>	
<p>SCALE: AS SHOWN</p>		<p>DESIGNED BY: AT</p>		<p>DRAWN BY: SB</p>	

Daniel P. Hamm
REGISTERED PROFESSIONAL ENGINEER
No. 40720

PROPOSED ANTENNA TO
REPLACE EXISTING MOUNTED
TO EXISTING MOUNTING PIPE
(TYP. 1 PER SECTOR)

PROPOSED SURGE ARRESTOR
DC2-48-60-0-9E
(TYP. OF 1 PER SECTOR)

PROPOSED RRH MOUNTED
TO PROPOSED UNISTRUT
(TYP. OF 2 PER SECTOR)

EXISTING
MOUNTING
FRAME

EXISTING ANTENNA
TYP.

EXISTING BRICK
PENTHOUSE

PROPOSED 2"
FLEX CONDUIT FOR
POWER & FIBER
(TO FOLLOW
EXISTING COAX)

PROPOSED FIBER
POWER CONNECTOR
FC12-PC6-10E
MOUNTED TO WALL
(BEYOND)

TOP OF PROPOSED ANTENNAS
77'-0"± AGL
CENTER OF PROPOSED ANTENNAS
75'-0"± AGL

TOP OF ROOF
68'-0"± AGL

EXISTING DECK (TYP.)

PROPOSED 3" FLEX
CONDUIT FOR
POWER & FIBER
(TO FOLLOW
EXISTING COAX)

EXISTING AT&T
EQUIPMENT ROOM
ON FIRST FLOOR
OF BUILDING

GROUND LEVEL
0'-0"± AGL

NORTHEAST ELEVATION

SCALE: 1/8"=1'-0"

0'-0" 4'-0" 8'-0" 16'-0" 24'-0"

PROPOSED ANTENNA TO
REPLACE EXISTING MOUNTED
TO EXISTING MOUNTING PIPE
(TYP. 1 PER SECTOR)

PROPOSED SURGE ARRESTOR
DC2-48-60-0-9E
(TYP. OF 1 PER SECTOR)

PROPOSED RRH MOUNTED
TO PROPOSED UNISTRUT
(TYP. OF 2 PER SECTOR)

EXISTING
MOUNTING
FRAME

EXISTING ANTENNA
TYP.

EXISTING BRICK
PENTHOUSE

EXISTING DISH

PROPOSED 2"
FLEX CONDUIT FOR
POWER & FIBER
(TO FOLLOW
EXISTING COAX)

PROPOSED FIBER
POWER CONNECTOR
FC12-PC6-10E
MOUNTED TO WALL
(BEYOND)

PROPOSED 3" FLEX
CONDUIT FOR
POWER & FIBER
(TO FOLLOW
EXISTING COAX)

TOP OF PROPOSED ANTENNAS
77'-0"± AGL
CENTER OF PROPOSED ANTENNAS
75'-0"± AGL

TOP OF ROOF
68'-0"± AGL

EXISTING DECK (TYP.)

EXISTING AT&T
EQUIPMENT ROOM
ON FIRST FLOOR
OF BUILDING

GROUND LEVEL
0'-0"± AGL

NORTHWEST ELEVATION

SCALE: 1/8"=1'-0"

0'-0" 4'-0" 8'-0" 16'-0" 24'-0"



1600 OSGOOD STREET
BUILDING 20 NORTH, SUITE 2-101
N. ANDOVER, MA 01845
TEL: (978) 557-5553
FAX: (978) 336-5586



22 KEEWAYDIN DRIVE
SALEM, NH 03079

SITE NUMBER: MA2231
SITE NAME: SOMERVILLE 425
BROADWAY (MA0022)

425 BROADWAY
SOMERVILLE, MA 02145
MIDDLESEX COUNTY



550 COCHITUATE ROAD
FRAMINGHAM, MA 01701

				AT&T			
				ELEVATIONS			
NO.	DATE	REVISIONS	BY	CHK	APP'D	JOB NUMBER	DRAWING NUMBER
2	12/15/10	ISSUED FOR ZONING	SB	AT	DPH	2231.01	A-3
1	10/04/10	ISSUED FOR ZONING	SB	AT	DPH		
A	10/01/10	ISSUED FOR REVIEW	SB	AT	DPH		
SCALE: AS SHOWN				DESIGNED BY: AT		DRAWN BY: SB	
						REV	
						2	

PACKING MATERIAL: MIN 1-1/2 in. THICKNESS OF MIN 6 pcf MINERAL WOOL BATT INSULATION FIRMLY PACKED INTO OPENING AS A PERMANENT FORM. PACKING MATERIAL TO BE RECESSED FROM TOP SURFACE OF FLOOR OR FROM BOTH SURFACES OF WALL AS REQUIRED TO ACCOMMODATE THE REQUIRED THICKNESS OF FILL MATERIAL.

FILL VOID OR CAVITY MATERIAL - SEALANT:
MIN 2 in. THICKNESS OF FILL MATERIAL APPLIED WITHIN ANNULUS, FLUSH WITH THE TOP SURFACE OF FLOOR OR WITH BOTH SURFACES OF WALL.

SPECIFIED TECHNOLOGIES, INC.
SPECSEAL SERIES SSS SEALANT OR
SPECSEAL LCI SEALANT.

UL SYSTEM NUMBER: C-AJ-2057
F RATING - 2 HR.

PVC CONDUIT PENETRATION DETAIL IN CONCRETE OR MASONRY

PACKING MATERIAL: MIN. 1 in. THICKNESS OF MIN. 3.5 pcf FIBERGLASS INSULATION SHALL BE WRAPPED AROUND THE THROUGH-PENETRANT AND SECURED TOGETHER BY MEANS OF NO. 24 AWG STEEL TIE WIRE. PACKING MATERIAL SHALL BE CENTERED AT MID-DEPTH OF OPENING AND RECESSED FROM BOTH SURFACES OF WALL ASSEMBLY REQUIRED TO ACCOMMODATE THE REQUIRED THICKNESS OF FILL MATERIAL.

FILL VOID OR CAVITY MATERIAL - CAULK OR PUTTY:
IN 2 HR FIRE RATED ASSEMBLIES MIN 3/4 in. THICKNESS FILL MATERIAL APPLIED WITHIN THE ANNULUS, FLUSH BOTH SURFACES OF WALL. ADDITIONAL FILL MATERIAL TO BE INSTALLED SUCH THAT A MIN 1/4 in. CROWN IS FORMED AROUND THE PENETRATING ITEM. IN 1 HR FIRE RATED ASSEMBLIES, MIN 5/8 in. THICKNESS OF FILL MATERIAL APPLIED WITHIN ANNULUS ON BOTH SURFACES OF WALL. ADDITIONAL FILL MATERIAL TO BE INSTALLED SUCH THAT A MIN 3/8 in. CROWN IS FORMED AROUND THE PENETRATING ITEM AND LAPPING 1 in. BEYOND THE PERIPHERY OF THE OPENING.

SPECIFIED TECHNOLOGIES, INC.
SPECSEAL SERIES SSS SEALANT,
SPECSEAL LCI SEALANT OR SPECSEAL PUTTY.

UL SYSTEM NUMBER: W-L-1029
F RATING - 1 & 2 HR.

PIPE AND CONDUIT PENETRATION DETAIL IN GYPSUM WALLBOARD

MAXIMUM PIPE DIAMETER (in.)	MAXIMUM EMT	ANNULAR SPACE (in.)	FORMING MATERIAL THICKNESS (in.)	MINIMUM SEALANT THICKNESS (in.)	F RATING (HOURS)	T RATING (HOURS)
1-1/2	-	3/8 TO 2-1/8	2-1/2	2	3	1
6	4	3/8 TO 3/4	3-1/2	1	3	0
6	4	3/8 TO 1	2-1/2	2	3	0

CONCRETE FLOOR OR WALL ASSEMBLY, MINIMUM 4-1/2 in. THICKNESS FLOOR/ MINIMUM 6-1/2 in. WALL.

TYPE AS OR TYPE SS:
MINIMUM THICKNESS OF SEALANT AS SPECIFIED IN THE TABLE BELOW, APPLIED WITHIN THE OPENING, FLUSH WITH THE TOP SURFACE OF THE FLOOR OR BOTH SURFACES OF THE WALL.

FORMING MATERIAL:
MINERAL WOOL INSULATION
(MINIMUM 4.0 pcf) FIRMLY PACKED INTO THE OPENING AS A PERMANENT FORM; SEE TABLE FOR MINIMUM REQUIRED THICKNESS

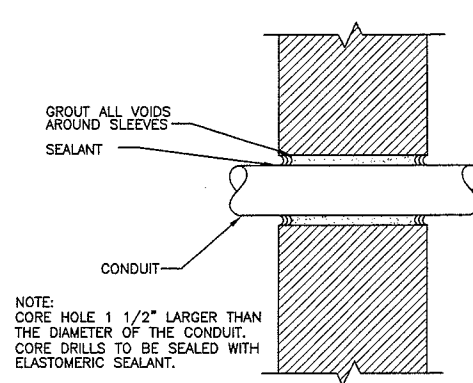
METALLIC PIPE:
STEEL PIPE: 6" (OR SMALLER) SCHEDULE 10 (OR HEAVIER) STEEL PIPE.
CONDUIT: 4" (OR SMALLER) ELECTRICAL METALLIC TUBING (EMT) OR 6" RIGID STEEL CONDUIT.

UL SYSTEM NUMBER: C-AJ-1020
F RATING - 3 HR.

PIPE AND CONDUIT PENETRATION DETAIL IN CONCRETE OR MASONRY

PENETRATION DETAILS

N.T.S.



NOTE:
CORE HOLE 1 1/2" LARGER THAN THE DIAMETER OF THE CONDUIT. CORE DRILLS TO BE SEALED WITH ELASTOMERIC SEALANT.

PIPE AND CONDUIT PENETRATION DETAIL IN NON-RATED PARTITION

ALL CORES THROUGH ELECTRIC
ROOMS TO BE FIRE-STOPPED.

USE FULL CONDUIT RUNS
THROUGH PENETRATIONS

WALL HR	MAX DIAM OF THROUGH PENETRANT in.	T RATING HR
1	2	1
1	1-1/4	1
2	2	1
2	1-1/4	1 1/2

THE HOURLY F RATING OF THE FIRESTOP SYSTEM IS EQUAL TO THE HOURLY FIRE RATING OF THE WALL ASSEMBLY IN WHICH IT IS INSTALLED.

THROUGH PENETRANTS: ONE 2" NONMETALLIC PIPE, CONDUIT OR RACEWAY TO BE CENTERED WITHIN THE FIRESTOP SYSTEM. A NOM ANNULAR SPACE OF 5/16 in. IS REQUIRED WITHIN THE FIRESTOP SYSTEM. PIPE, CONDUIT OR RACEWAY TO BE RIGIDLY SUPPORTED ON BOTH SIDES OF THE FLOOR OR WALL ASSEMBLY.

FILL VOID OR CAVITY MATERIAL - SEALANT:
MIN 5/8 in. THICKNESS OF FILL MATERIAL APPLIED WITHIN ANNULUS, FLUSH WITH BOTH SURFACES OF WALL. ADDITIONAL FILL MATERIAL TO BE INSTALLED SUCH THAT A MIN 1/4 in. THICK CROWN IS FORMED AROUND THE PENETRATING ITEM AND LAPPING 1 in. BEYOND THE PERIPHERY OF THE OPENING.

SPECIFIED TECHNOLOGIES, INC.
SPECSEAL SERIES SSS SEALANT,
SPECSEAL LCI SEALANT.

UL SYSTEM NUMBER: W-L-2093
F RATING - 1 & 2 HR.

PVC CONDUIT PENETRATION DETAIL IN GYPSUM WALLBOARD

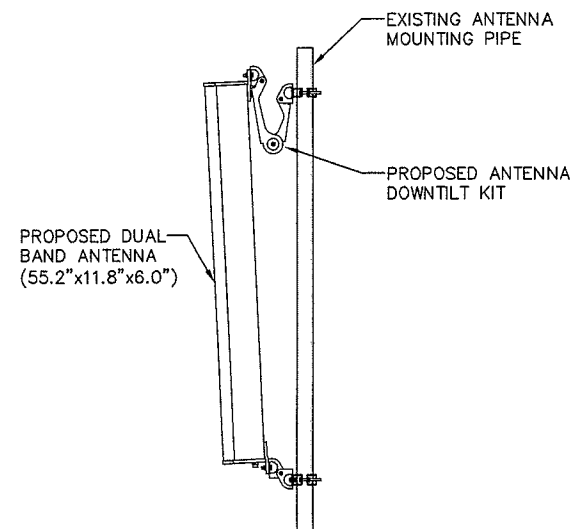
NOTE:

HDG ASSUMES THAT THE EXISTING BALLAST MOUNTS HAVE BEEN LOCATED OVER EXISTING STRUCTURAL SUPPORT MEMBERS.

CONTRACTOR TO FIELD VERIFY AS REQUIRED AND NOTIFY HDG OF ANY DISCREPANCIES.

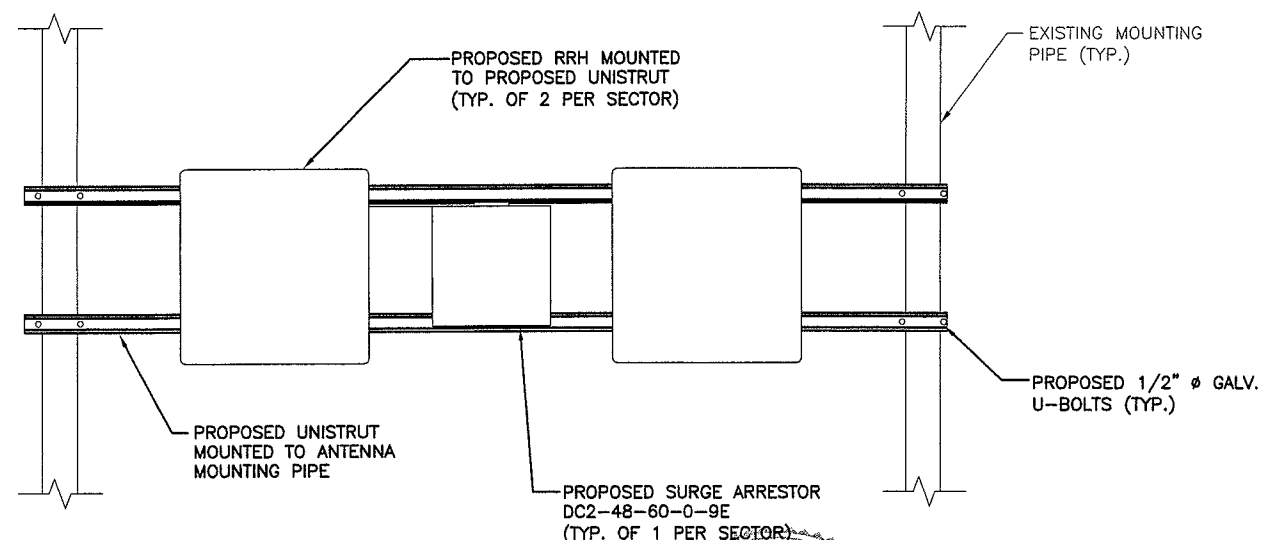
NOTE:

AN ANALYSIS FOR THE CAPACITY OF THE EXISTING STRUCTURES TO SUPPORT THE PROPOSED EQUIPMENT SHALL BE DETERMINED PRIOR TO CONSTRUCTION.



PROPOSED ANTENNA DETAIL

SCALE: N.T.S.



PROPOSED RRH MOUNTING DETAIL

SCALE: N.T.S.

Hudson
Design Group, Inc.
1600 OSGOOD STREET
BUILDING 20 NORTH, SUITE 2-101
N. ANDOVER, MA 01845
TEL: (978) 557-5553
FAX: (978) 336-5586

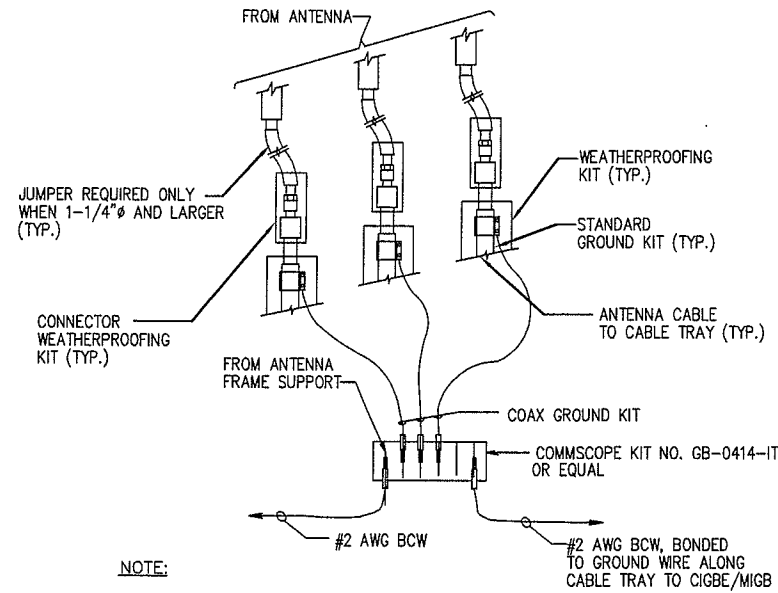


22 KEEWAYDIN DRIVE
SALEM, NH 03079

SITE NUMBER: MA2231
SITE NAME: SOMERVILLE 425
BROADWAY (MA0022)
425 BROADWAY
SOMERVILLE, MA 02145
MIDDLESEX COUNTY

at&t
550 COCHITUATE ROAD
FRAMINGHAM, MA 01701

2 12/15/10 ISSUED FOR ZONING				SB	AT	DPH	AT&T DETAILS
1 10/04/10 ISSUED FOR ZONING				SB	AT	DER	
A 10/01/10 ISSUED FOR REVIEW				SB	AT	DPH	
NO.	DATE	REVISIONS	BY	CHK	APP'D		
SCALE: AS SHOWN				DESIGNED BY: AT		DRAWN BY: SB	
						JOB NUMBER	DRAWING NUMBER
						2231.01	A-4
							REV
							2

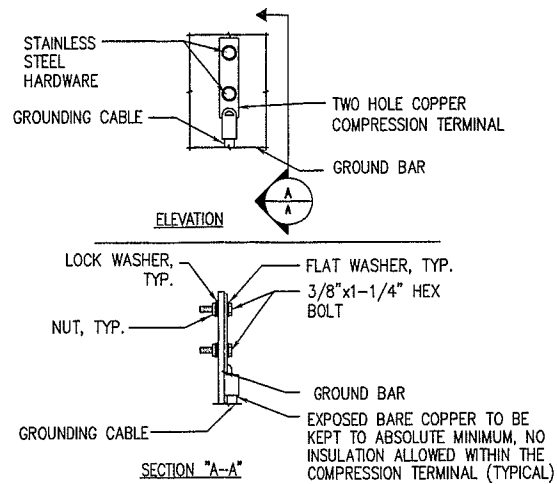


NOTE:

- DO NOT INSTALL CABLE GROUND KIT AT A BEND AND ALWAYS DIRECT GROUND WIRE DOWN TO CIGBE.

GROUND WIRE TO GROUND BAR CONNECTION DETAIL

1
—
N.T.S.



- NOTE:
- "DOUBLING UP" OR "STACKING" OF CONNECTION IS NOT PERMITTED.
 - OXIDE INHIBITING COMPOUND TO BE USED AT ALL LOCATIONS.
 - CADWELD DOWNLEADS FROM UPPER EGB, LOWER EGB, AND MGB.

TYPICAL GROUND BAR CONNECTION DETAIL

2
—
N.T.S.

EACH GROUND CONDUCTOR TERMINATING ON ANY GROUND BAR SHALL HAVE AN IDENTIFICATION TAG ATTACHED AT EACH END THAT WILL IDENTIFY ITS ORIGIN AND DESTINATION.

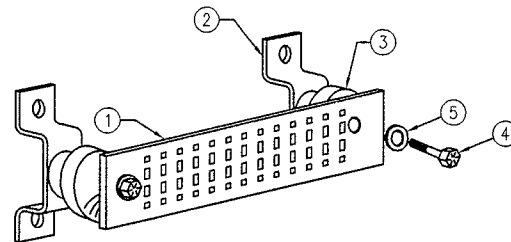
SECTION "P" - SURGE PRODUCERS

CABLE ENTRY PORTS (HATCH PLATES) (#2)
GENERATOR FRAMEWORK (IF AVAILABLE) (#2)
TELCO GROUND BAR
COMMERCIAL POWER COMMON NEUTRAL/GROUND BOND (#2)
+24V POWER SUPPLY RETURN BAR (#2)
-48V POWER SUPPLY RETURN BAR (#2)
RECTIFIER FRAMES.

SECTION "A" - SURGE ABSORBERS

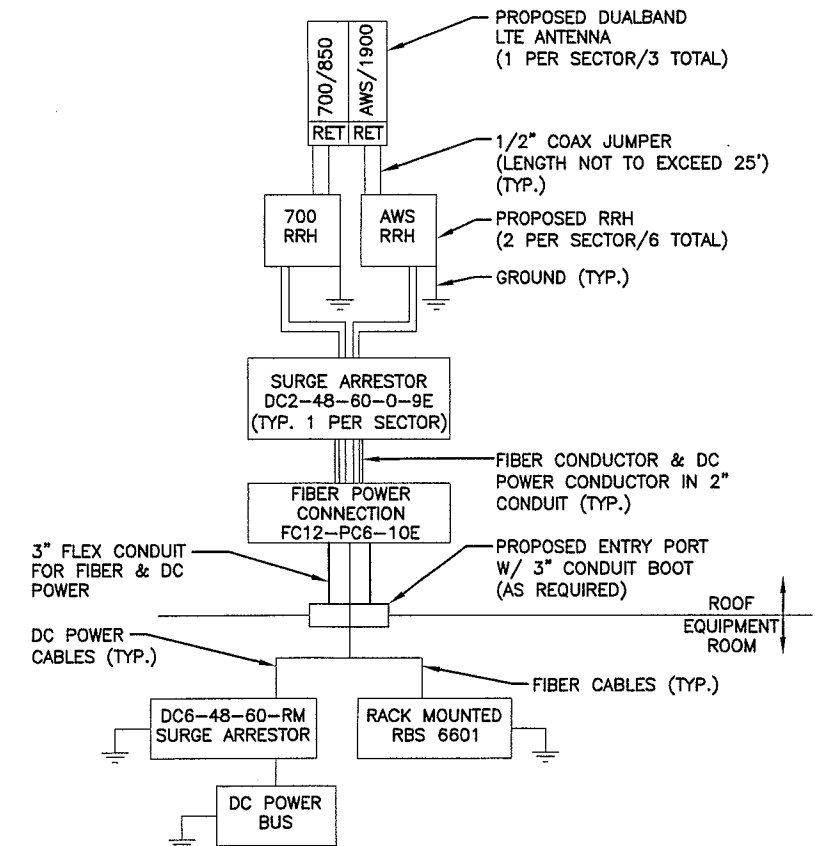
INTERIOR GROUND RING (#2)
EXTERNAL EARTH GROUND FIELD (BURIED GROUND RING) (#2)
METALLIC COLD WATER PIPE (IF AVAILABLE) (#2)
BUILDING STEEL (IF AVAILABLE) (#2)

WIRELESS SOLUTIONS INC.			
NO.	REQ.	PART NO.	DESCRIPTION
①	1	HLGB-0420-IS	SOLID GND. BAR (20"x4"x1/4")
②	2	—	WALL MTG. BRKT.
③	2	—	INSULATORS
④	4	—	5/8"-11x1" H.H.C.S.
⑤	4	—	5/8 LOCKWASHER



GROUND BAR - DETAIL

4
—
N.T.S.

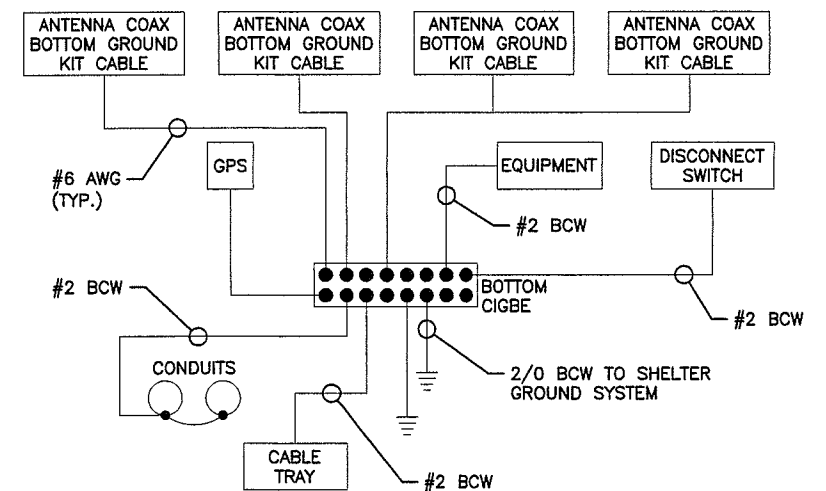


NOTES:

- CONTRACTOR TO CONFIRM ALL PARTS.
- INSTALL ALL EQUIPMENT TO MANUFACTURER'S RECOMMENDATIONS.

PLUMBING DIAGRAM

3
—
N.T.S.



NOTES:

- BOND ANTENNA GROUNDING KIT CABLE TO TOP CIGBE.
- BOND ANTENNA GROUNDING KIT CABLE TO BOTTOM CIGBE.

SCHEMATIC GROUNDING DIAGRAM

5
—
N.T.S.

Hudson
Design Group, Inc.
1600 OSGOOD STREET
BUILDING 20 NORTH, SUITE 2-101
N. ANDOVER, MA 01845
TEL: (978) 557-5553
FAX: (978) 336-5586

SAT
communications
22 KEEWAYDIN DRIVE
SALEM, NH 03079

SITE NUMBER: MA2231
SITE NAME: SOMERVILLE 425 BROADWAY (MA0022)
425 BROADWAY
SOMERVILLE, MA 02145
MIDDLESEX COUNTY

at&t
550 COCHITUATE ROAD
FRAMINGHAM, MA 01701

--	--	--	--	--	--	--	--	--	--	--	--	--	--	--	--	--	--	--	--	--	--	--	--	--	--	--	--	--	--	--	--	--	--	--	--	--	--	--	--	--	--	--	--	--	--	--	--	--	--	--	--	--	--	--	--	--	--	--	--	--	--	--	--	--	--	--	--	--	--	--	--	--	--	--	--	--	--	--	--	--	--	--	--	--	--	--	--	--	--	--	--	--	--	--	--	--	--	--	--	--	--	--	--	--	--	--	--	--	--	--	--	--	--	--	--	--	--	--	--	--	--	--	--	--	--	--	--	--	--	--	--	--	--	--	--	--	--	--	--	--	--	--	--	--	--	--	--	--	--	--	--	--	--	--	--	--	--	--	--	--	--	--	--	--	--	--	--	--	--	--	--	--	--	--	--	--	--	--	--	--	--	--	--	--	--	--	--	--	--	--	--	--	--	--	--	--	--	--	--	--	--	--	--	--	--	--	--	--	--	--	--	--	--	--	--	--	--	--	--	--	--	--	--	--	--	--	--	--	--	--	--	--	--	--	--	--	--	--	--	--	--	--	--	--	--	--	--	--	--	--	--	--	--	--	--	--	--	--	--	--	--	--	--	--	--	--	--	--	--	--	--	--	--	--	--	--	--	--	--	--	--	--	--	--	--	--	--	--	--	--	--	--	--	--	--	--	--	--	--	--	--	--	--	--	--	--	--	--	--	--	--	--	--	--	--	--	--	--	--	--	--	--	--	--	--	--	--	--	--	--	--	--	--	--	--	--	--	--	--	--	--	--	--	--	--	--	--	--	--	--	--	--	--	--	--	--	--	--	--	--	--	--	--	--	--	--	--	--	--	--	--	--	--	--	--	--	--	--	--	--	--	--	--	--	--	--	--	--	--	--	--	--	--	--	--	--	--	--	--	--	--	--	--	--	--	--	--	--	--	--	--	--	--	--	--	--	--	--	--	--	--	--	--	--	--	--	--	--	--	--	--	--	--	--	--	--	--	--	--	--	--	--	--	--	--	--	--	--	--	--	--	--	--	--	--	--	--	--	--	--	--	--	--	--	--	--	--	--	--	--	--	--	--	--	--	--	--	--	--	--	--	--	--	--	--	--	--	--	--	--	--	--	--	--	--	--	--	--	--	--	--	--	--	--	--	--	--	--	--	--	--	--	--	--	--	--	--	--	--	--	--	--	--	--	--	--	--	--	--	--	--	--	--	--	--	--	--	--	--	--	--	--	--	--	--	--	--	--	--	--	--	--	--	--	--	--	--	--	--	--	--	--	--	--	--	--	--	--	--	--	--	--	--	--	--	--	--	--	--	--	--	--	--	--	--	--	--	--	--	--	--	--	--	--	--	--	--	--	--	--	--	--	--	--	--	--	--	--	--	--	--	--	--	--	--	--	--	--	--	--	--	--	--	--	--	--	--	--	--	--	--	--	--	--	--	--	--	--	--	--	--	--	--	--	--	--	--	--	--	--	--	--	--	--	--	--	--	--	--	--	--	--	--	--	--	--	--	--	--	--	--	--	--	--	--	--	--	--	--	--	--	--	--	--	--	--	--	--	--	--	--	--	--	--	--	--	--	--	--	--	--	--	--	--	--	--	--	--	--	--	--	--	--	--	--	--	--	--	--	--	--	--	--	--	--	--	--	--	--	--	--	--	--	--	--	--	--	--	--	--	--	--	--	--	--	--	--	--	--	--	--	--	--	--	--	--	--	--	--	--	--	--	--	--	--	--	--	--	--	--	--	--	--	--	--	--	--	--	--	--	--	--	--	--	--	--	--	--	--	--	--	--	--	--	--	--	--	--	--	--	--	--	--	--	--	--	--	--	--	--	--	--	--	--	--	--	--	--	--	--	--	--	--	--	--	--	--	--	--	--	--	--	--	--	--	--	--	--	--	--	--	--	--	--	--	--	--	--	--	--	--	--	--	--	--	--	--	--	--	--	--	--	--	--	--	--	--	--	--	--	--	--	--	--	--	--	--	--	--	--	--	--	--	--	--	--	--	--	--	--	--	--	--	--	--	--	--	--	--	--	--	--	--	--	--	--	--	--	--	--	--	--	--	--	--	--	--	--	--	--	--	--	--	--	--	--	--	--	--	--	--	--	--	--	--	--	--	--	--	--	--	--	--	--	--	--	--	--	--	--	--	--	--	--	--	--	--	--	--	--	--	--	--	--	--	--	--	--	--	--	--	--	--	--	--	--	--	--	--	--	--	--	--	--	--	--	--	--	--	--	--	--	--	--	--	--	--	--	--	--	--	--	--	--	--	--	--	--	--	--	--	--	--	--	--	--	--	--	--	--	--	--	--	--	--	--	--	--	--	--	--	--	--	--	--	--	--	--	--	--	--	--	--	--	--	--	--	--	--	--	--	--	--	--	--	--	--	--	--	--	--	--	--	--	--	--	--	--	--	--	--	--	--	--	--	--	--	--	--	--	--	--	--	--	--	--	--	--	--	--	--	--	--	--	--	--	--	--	--	--	--	--	--	--	--	--	--	--	--	--	--	--	--	--	--	--	--	--	--	--	--	--	--	--	--	--	--	--	--	--	--	--	--	--	--	--	--	--	--	--	--	--	--	--	--	--	--	--	--	--	--	--	--	--	--	--	--	--	--	--	--	--	--	--	--	--	--	--	--	--	--	--	--	--	--	--	--	--	--	--	--	--	--	--	--	--	--	--	--	--	--	--	--	--	--	--	--	--	--	--	--	--	--	--	--	--	--	--	--	--	--	--	--	--	--	--	--	--	--	--	--	--	--	--	--	--	--	--	--	--	--	--	--	--	--	--	--	--	--	--	--	--	--	--	--	--	--	--	--	--	--	--	--	--	--	--	--	--	--	--	--	--	--	--	--	--	--	--	--	--	--	--	--	--	--	--	--	--	--	--	--	--	--	--	--	--	--	--	--	--	--	--	--	--	--	--	--	--	--	--	--	--	--	--	--	--	--	--	--	--	--	--	--	--	--	--	--	--	--	--	--	--	--	--	--	--	--	--	--	--	--	--	--	--	--	--	--	--	--	--	--	--	--	--	--	--	--	--	--	--	--	--	--	--	--	--	--	--	--	--	--	--	--	--	--	--	--	--	--	--	--	--	--	--	--	--	--	--	--	--	--	--	--	--	--	--	--	--	--	--	--	--	--	--	--	--	--	--	--	--	--	--	--	--	--	--	--	--	--	--	--	--	--	--	--	--	--	--	--	--	--	--	--	--	--	--	--	--	--	--	--	--	--	--	--	--	--	--	--	--	--	--	--	--	--	--	--	--	--	--	--	--	--	--	--	--	--	--	--	--	--	--	--	--	--	--	--	--	--	--	--	--	--	--	--	--	--	--	--	--	--	--	--	--	--	--	--	--	--	--	--	--	--	--	--	--	--	--	--	--	--	--	--	--	--	--	--	--	--	--	--	--	--	--	--	--	--	--	--	--	--	--	--	--	--	--	--	--	--	--	--	--	--	--	--	--	--	--	--	--	--	--	--	--	--	--	--	--	--	--	--	--	--	--	--	--	--	--	--	--	--	--	--	--

Daniel P. Hamm
REGISTERED PROFESSIONAL ENGINEER
No. 40720
AT&T
PLUMBING DIAGRAM & DETAILS

LOCUS MAP



FOR VISUAL REFERENCE ONLY.
ACTUAL VISIBILITY IS DEPENDANT
UPON WEATHER CONDITIONS, SEASON,
SUNLIGHT, AND VIEWER LOCATION



PHOTO LOCATIONS
NOT TO SCALE

1

PHOTO LOCATION

REV1: 11/22/10

SITE NO: MA2231
SITE NAME: SOMERVILLE 425 BROADWAY
ADDRESS: 425 BROADWAY
SOMERVILLE, MA 02145

 **at&t**
550 COCHITUATE ROAD
FRAMINGHAM, MA 01701

SITE TYPE: ROOFTOP

DATE:
10/22/10

DRAWN BY: DB

SCALE: NTS

EXISTING CONDITIONS



PHOTO LOCATION # 1
VIEW EAST FROM BROADWAY/KILSYTH RD. INTERSECTION
DATE OF PHOTO: 10/17/10

REV1: 11/22/10

SITE NO: MA2231
SITE NAME: SOMERVILLE 425 BROADWAY
ADDRESS: 425 BROADWAY
SOMERVILLE, MA 02145

 **at&t**
550 COCHITUATE ROAD
FRAMINGHAM, MA 01701

SITE TYPE: ROOFTOP

DATE:
10/22/10

DRAWN BY: DB

SCALE: NTS

PROPOSED CONDITIONS

PROPOSED ANTENNA MOUNTED TO
EXISTING MOUNTING PIPE
(TYP. 1 PER SECTOR, TOTAL OF 3)



PHOTO LOCATION # 1

VIEW EAST FROM BROADWAY/KILSYTH RD. INTERSECTION

DATE OF PHOTO: 10/17/10

REV1: 11/22/10

SITE NO: MA2231
SITE NAME: SOMERVILLE 425 BROADWAY
ADDRESS: 425 BROADWAY
SOMERVILLE, MA 02145

 **at&t**
550 COCHITUATE ROAD
FRAMINGHAM, MA 01701

SITE TYPE: ROOFTOP

DATE:
10/22/10

DRAWN BY: DB

SCALE: NTS

EXISTING CONDITIONS



PHOTO LOCATION # 2
VIEW NORTHWEST FROM BROADWAY
DATE OF PHOTO: 10/17/10

REV1: 11/22/10

SITE NO: MA2231
SITE NAME: SOMERVILLE 425 BROADWAY
ADDRESS: 425 BROADWAY
SOMERVILLE, MA 02145

 **at&t**
550 COCHITUATE ROAD
FRAMINGHAM, MA 01701

SITE TYPE: ROOFTOP

DATE:
10/22/10

DRAWN BY: DB

SCALE: NTS

PROPOSED CONDITIONS

PROPOSED ANTENNA MOUNTED TO
EXISTING MOUNTING PIPE
(TYP. 1 PER SECTOR, TOTAL OF 3)



PHOTO LOCATION # 2
VIEW NORTHWEST FROM BROADWAY
DATE OF PHOTO: 10/17/10

REV1: 11/22/10

SITE NO: MA2231
SITE NAME: SOMERVILLE 425 BROADWAY
ADDRESS: 425 BROADWAY
SOMERVILLE, MA 02145

 **at&t**
550 COCHITUATE ROAD
FRAMINGHAM, MA 01701

SITE TYPE: ROOFTOP

DATE:
10/22/10

DRAWN BY: DB

SCALE: NTS

EXISTING CONDITIONS



PHOTO LOCATION # 3
VIEW SOUTHWEST FROM FREMONT ST.
DATE OF PHOTO: 10/22/10

REV1: 11/22/10

SITE NO: MA2231
SITE NAME: SOMERVILLE 425 BROADWAY
ADDRESS: 425 BROADWAY
SOMERVILLE, MA 02145

 **at&t**
550 COCHITUATE ROAD
FRAMINGHAM, MA 01701

SITE TYPE: ROOFTOP

DATE:
10/22/10

DRAWN BY: DB

SCALE: NTS

PROPOSED CONDITIONS



PROPOSED ANTENNA MOUNTED TO
EXISTING MOUNTING PIPE
(TYP. 1 PER SECTOR, TOTAL OF 3)



PHOTO LOCATION # 3
VIEW SOUTHWEST FROM FREMONT ST.
DATE OF PHOTO: 10/22/10

REV1: 11/22/10

SITE NO: MA2231
SITE NAME: SOMERVILLE 425 BROADWAY
ADDRESS: 425 BROADWAY
SOMERVILLE, MA 02145

 **at&t**
550 COCHITUATE ROAD
FRAMINGHAM, MA 01701

SITE TYPE: ROOFTOP

DATE:
10/22/10

DRAWN BY: DB

SCALE: NTS